

APPENDIX-11

Format for Detailed Project Report (DPR) for the Establishment of a New Technical Institution

1.1 Preamble

Detailed Project Report(DPR) is expected to cover the genesis of the proposal with respect to the background of the Technical Education and Industrial scenario of the State where the proposed Institution is being located and the credentials of the Consultants, if any, engaged by the Promoters.

a. Introduction

With India at the juncture of becoming a 5 trillion dollar economy, it is imperative that it must develop efficiency in the management of its resources in every area of business. Management in finance, production, marketing, etc. has become crucial in the competitive operation of any organization, business or institution. It is envisaged that India will become a developed country in the next few years and therefore will require trained human resources in business management to maximize the utilization of resources.

b. Background of the Consultants

The DPR has been prepared by Management experts of the Institution.

c. Technical Education and Industry Scenario

Experts in Business Administration will always be required by the industry, more so in the case of a growing economy like India's. And Uttar Pradesh being the largest state of India has the human resources to make it the platform where training and development of management personnel can take place. Greater NOIDA is an upcoming city which has become an education hub for the NCR region. With Jewar airport becoming operational, along with multiple national and international industries, the need for trained personnel with acute business acumen will be immense.

1.2 The Promoting Body

The status of the Promoting Body, its legal standing with respect to registration formalities, nature of the Body viz., Charitable Trust, Family Trust, Co-operative Society, Public Society etc., its activities since its inception with specific emphasis on its Social, Charitable, educational activities along with a list of major activities undertaken to date, its mission and vision shall be described as follows:

a. Introduction to its Genesis including its Registration Status

Rama-Eesh Charitable Trust was founded in August 4, 1992. It is registered under the Income Tax Act. The Trust was formed by the Chairman, Dr. R.C. Sharma, formerly Senior Advisor, UNESCO to contribute to the field of education and health for the betterment of the society.

b. Details of its Promoters including their Background

The promoters are educationists of national and international repute who have made significant contributions in the field of education and have a philanthropic approach.

Dr. R. C.Sharma, M.Sc., Ph.D., Ed.D.(Columbia University), Former Adviser, UNESCO, Paris

Shri R.D.Sharma, Retired ITI professor

Ms. Pratibha Sharma, MBA, associated with Ram-Eesh Group of Institutions for over 25 years

c. **Activities of the Promoting Body including a listing of major Educational promotion activities undertaken by it in the past**

The promoting body has been involved in the following social and educational activities:

- Establishment of educational institutions in Greater NOIDA providing education from Nursery to Class XII, D.Pharma., B.Pharma, M.Pharma, and Diploma in Engineering.
- Providing Scholarship to poor and deserving students
- Providing free education to orphan girls
- Donating to PM relief fund, CM relief fund in times of natural calamities
- Providing daily Bhandara to 300 persons outside GIMS hospital, Greater NOIDA
- Providing food rations to homeless and destitute being taken care of by Earth Saviours' Foundation.

d. **Mission of the Promoting Body**

To establish centers of excellence in education from the preprimary to doctorate level where students are infused with the values of righteousness, truth and service to the country.

e. **Vision of the Promoting Body**

To develop educational institutions which are providing excellence in education at a reasonable cost while at the same time instilling ethics and values in the students. Also to make such high quality institutions accessible to the public.

1.3 Objectives and Scope of the Proposed Institution

The goal of the proposed Institution, Scope and Justification of its establishment in the light of the prevailing Technical Education and Industrial scenario in the State, availability of students for admission, particularly the number of students passing the qualifying examination viz., +2 Science with First Class and the number of seats already available in the particular Course (B.E/B.HMCT/ MBA/ MCA/ Diploma, etc.) in the State, and the genesis of the proposal with respect to the technical manpower requirement of the State, if available shall be described as follows:

a. **Objectives of the Institution**

- a. To establish an educational institution providing excellence in business management education.
- b. To develop linkages with the corporate world and renowned Institutes of Management so that students are exposed to the best and latest techniques in Management.

b. **General and Technical Education Scenario of the State**

Experts in Business Administration will always be required by the industry, more so in the case of a growing economy like India's. And Uttar Pradesh being the largest state of India has the human resources to make it the platform where training and development of management personnel can take place. Greater NOIDA is an upcoming city which has become an education hub for the NCR region. With Jewar airport becoming operational, along with multiple national and international industries, the need for trained personnel with acute business acumen will be immense.

c. **Status at Entry Level**

Minimum status is 10 +2.

d. **Status of Technical Level manpower**

As the Institute is located in Greater NOIDA, it is in very close proximity to the Capital and to the industrial areas of NOIDA and Ghaziabad. Thus the requirement of high quality technical

management manpower is abundant. And interfacing the academic programme with the industry will also be possible.

e. **Industrial Scenario of the State**

The State of Uttar Pradesh is a booming state and is the preferred state for investment by both national and international companies. With the Jewar airport becoming operational soon, Greater NOIDA will further become a hub of business activity.

f. **Scope of the Institution vis-à-vis the Industrial Scenario and Educational Facilities already available in the State.**

Considering the growth rate of the country, a need for high quality conscious institutions exists. Though there has been a mushrooming of institutions, the demand for an institution that is actually providing training and management skills of high level still exists. The reputation of Ram-Eesh Group of Institutions for providing good education interfaced with practical and industrial knowledge will always create scope for its success.

1.4 Academic Programme

The basic Academic Philosophy of the Institution and to list the identified Programmes, targets, and various facilities shall be described as follows:

a. **Basic Academic Philosophy of the Institution**

The philosophy of the Institute is to provide high quality education while instilling the values of righteousness, integrity, truth and service to the country in the students. Education without values is of no benefit to the nation.

b. **Types of Programme**

1. Ram-Eesh Institute of Vocational and Technical Education is providing Diploma in Pharmacy, B.Pharm, M.Pharm affiliated to Dr. Abdul Kalam Technical University, Lucknow.
2. Ram-Eesh Institute of Engineering and Technology is providing 3 year Diploma in Engg.
3. Ram-Eesh International School is providing education from Classes nursery to Class XII.

c. **Identified Programmes**

BBA in Ram-Eesh Institute of Management

d. **Phase-wise Introduction of Programmes and Intake**

This three year programme will have an intake of 60 students per year.

e. **Target Date for Start of Academic Programmes**

July 2025

f. **Central Computing facility**

150 sq. mtrs

g. **Central Library**

155 sq. mtrs

h. **Central Workshop**

N/A

i. **Central Instrumentation Facility**

N/A

j. **Affiliating Body**

Dr. Abdul Kalam Technical University, Lucknow

k. **Scholarships**

Scholarships and fee concessions are given to poor and meritorious students.

l. **Preventive measures of Ragging**

The Institute takes very strict measures to ensure that there is no ragging in the campus.

Some of the measures include:

1. Constitution of Anti ragging committee
2. Constitution of Anti ragging squad
3. Affidavits signed by Senior students
4. Mentor taking care of every 10 students
5. Healthy interaction between juniors and seniors in presence of faculty members

m. **Welfare measures for Faculty, Staff and students**

Ram-Eesh Group of Institutions believes in ensuring the welfare of its students, staff and faculty. Specific measures taken for the students include:

1. Opportunity to be a part of various cocurricular clubs and activities
2. Complete outdoor sports facilities including football, cricket, volleyball, basketball, badminton, yoga, etc and indoor sports facilities such as carom, table tennis, chess, etc.
3. Registered Nurse for emergencies
4. Counsellor for special cases
5. Grievance redressal cell
6. Accident insurance

Specific measures taken for staff and faculty welfare:

1. Supportive work atmosphere
2. Timely salary and increments
3. Provision for PF, Gratuity and Accident insurance
4. Growth opportunities

1.5 In case of standalone PGDM Programmes, comprehensive details in respect of admission procedure, Programme structure, Curriculum outline and contents, evaluation system etc. should necessarily be submitted. Standalone PGDM Programmes shall be regulated as per Appendix 9 of the Approval Process Handbook.

N/A

1.6 Salient Features of Academic Programmes

Phase-wise details of the Academic Programmes /Divisions that the Proposed Institution desires to setup in consonance with its Academic Philosophy, including the Objectives, Areas of Focus, Detailed Analysis of Requirements of Faculty, Building Space, Equipment, etc. for each Academic Division shall be described as follows:

a. **Classification of Academic Divisions, i.e. Departments, Centres, Schools, Central Academic Facilities**

The BBA programme would be started in Ram-Eesh Institute of Management.

b. **Details of each Academic Department/Centre, such as:**

- **Academic Objectives**

To establish a Management Institute that will provide excellence in management education and its application

- **Areas of Focus**

The areas of focus will be the teaching learning process, interface with Industry, exposure to latest Management techniques and ideologies.

- **Academic Programme**

The focus of the academic programme will be the timely execution of the course curriculum, student attendance and results. Project reports, visits to the Industry and visits by industry experts will be integral part of the programme.

- **Faculty Requirement and Phase-wise Recruitment**

Faculty will be recruited in a phase wise manner with 1 Professor/Director, 1 Associate Professors and 2 Assistant Professors in the first year; 1 Associate Professor and 2 Assistant Professor in the second year; and 2 Assistant Professors in the third year. The regular faculty will be supplemented by Guest lectures from the industry.

- **Requirement of Laboratories, Space and Equipment(cost)**

A computer center are available for the students along with language lab. A smart classroom and Seminar Hall for presentations are also be available for the students.

- **Requirement of other Space like ClassRooms, Faculty Rooms, Departmental Office**

Classrooms, faculty rooms, and departmental office are available as per requirement and norms.

1.7 Quality and Human Resource Development

The Human Resource Developmental aspects of the proposed Institution including, the Policies of the Management to promote excellence among Faculty and Staff, Strategies to attract and retain bright Faculty and methodologies towards quality management and fostering of academic excellence shall be described as follows:

a. **Academic Values**

To ensure effective conduct of the programme, top quality faculty to deliver the syllabus. The faculty would be expected to give professional, curricular and co curricular training to the students so as to ensure all round development.

b. **Recruitment, Strategies for Attracting and Retention of Faculty Personnel for Excellence, Promotional Avenues, Career Ladder**

Applications will be invited through advertisement followed by shortlisting and interviews by a duly constituted Selection Committee. The UGC/AICTE scales with permissible rate allowance would be provided to retain faculty. Additional benefits such as in campus accommodation would also be provided. The faculty would be given ample opportunities to rise in their career ladder.

- c. **Policies for Teaching and Non-Teaching Staff Development**
Participation in faculty and staff development programmes in the Institute and in other Institutes would be encouraged and made mandatory as well. Seminars and workshops on teaching learning processes would be conducted to enhance the learning experience of the students.
- d. **Permanent and Contract Services for Teaching, Non-Teaching and other support Personnel**
The employment will be initially on a probation basis and if found satisfactory, would become regular.
- e. **Total Quality Management**
With a properly planned execution of the curriculum, the quality of the programme will be ensured. In all focus areas of the programme, concise planning and delivery will ensure total quality management.
- f. **Overall Teaching and Non-Teaching Staff**
Faculty will be recruited in a phase wise manner with 1 Professor/Director, 1 Associate Professors and 2 Assistant Professors in the first year; 1 Associate Professor and 2 Assistant Professor in the second year; and 2 Assistant Professors in the third year. The regular faculty will be supplemented by Guest lectures from the industry. Non teaching staff will also be recruited as per requirement.

1.8 Linkages in Technical Education

Elaborate the external linkages envisaged along with the strategies for promotion of R&D, Partnership with Industry, etc. for the wholesome growth of students as well as for the contribution of the Institutions to Society at large, as follows:

- a. **Introduction**
External linkages of the programme are very critical to the BBA programme as the study of management is linked to every sphere of the society and the application of efficient management principles affect the functioning of the country.
- b. **Linkages with Industry**
Interfacing with the industry would be of prime importance in this programme. Without such an interface, students would be restricted to only theoretical knowledge. As the Institute is situated in Greater NOIDA, the Institute will have access to develop links with the industry in and around the NCR region. This will be one of the prime focus areas of the programme.
- c. **Linkages with the Community**
The promoters are involved in charitable activities and will encourage the students to be a part of those activities. Some of the activities the students can become a part of is the daily bhandara to patients and attendants at GIMS hospital; visits to nearby villages to create awareness of hygiene and basic health care; visits to orphanages, senior citizen homes and special children homes. Interactions with the community is imperative to create a sense of service to the society.
- d. **Linkages with other Technical Institutions in the region**
Professional as well as co curricular linkages with other Management institutions in the region will ensure the students' professional as well as personality development.
- e. **Linkages with Institutions of excellence such as the IITs and IISc, Bangalore Linkages Abroad**
The Institute will attempt to establish connections with IITs, IISc, IIMs and other eminent national level Management Institutions.

f. **Linkages with R&D Laboratories**

A curiosity for exploration and experimentation will be instilled in the students to develop projects and innovative techniques of management.

1.9 Governance, Academic and Administrative Management

The basic Philosophy of Governance and Administrative Management including the structure of its Board of Governors(BoG)/Board of Management(BoM), the Organizational chart for Operational Management along with responsibilities vested at various Levels of Administrative hierarchy. It is expected that a well thought out method of Institutional Governance and Administration shall be the key to its growth and success shall be described as follows:

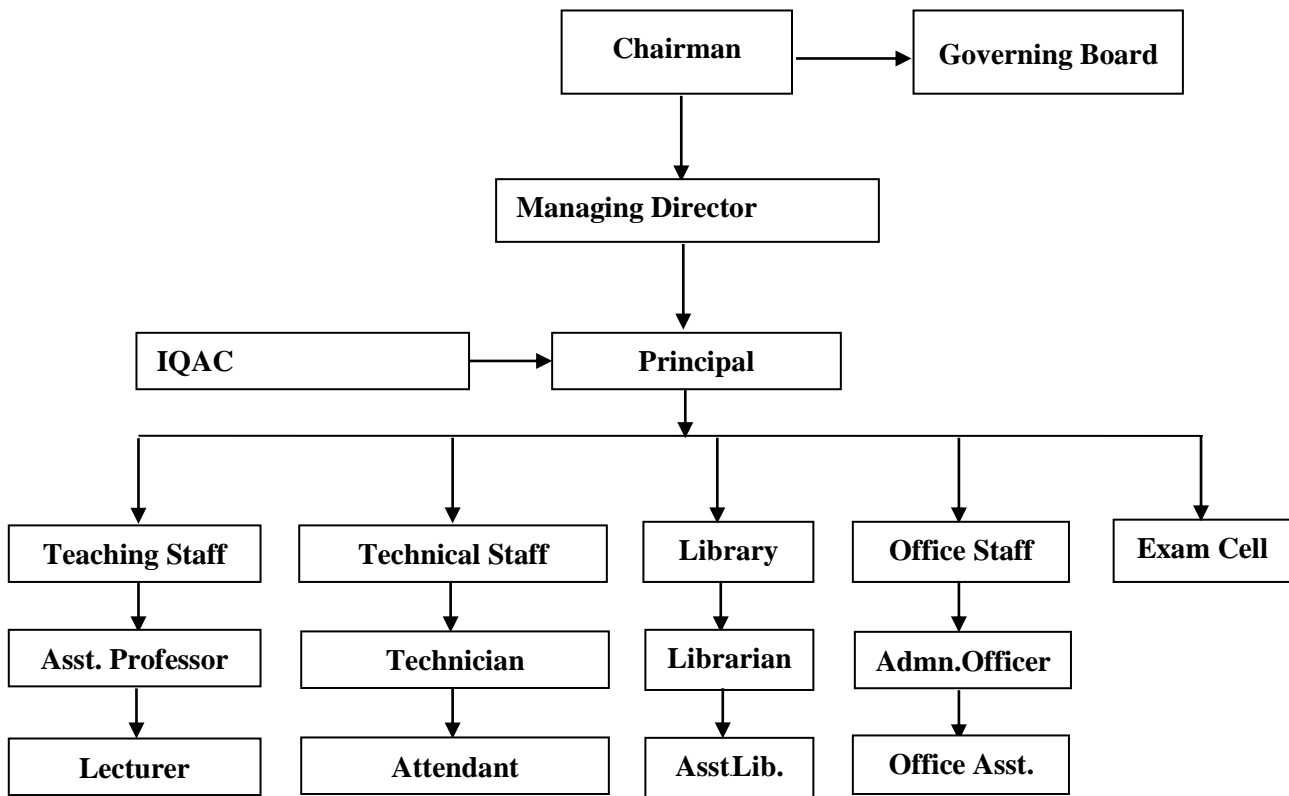
a. **Philosophy of Governance**

The Philosophy of governance is to provide direction and vision to the Institute while empowering the individual department to become independent, responsible, quality conscious executors of the programme.

b. **Board of Governors**

S. No.	Designation
1	Chairman
2	Members to be nominated by the Registered Society/Trust \
3	
4	A reputed Industrialist
5	One Faculty members of the Institute.
6	Nominated one Parents by Chairman
7	Nominee of the A K T U
8	Principal, Ram-Eesh Institute of Management (Member Secretary)

c. **Organizational Structure and Chart for day-to-day Operations and Management**



d. **Role and Responsibilities of Key Senior Positions**

CHAIRMAN:

1. Providing vision and direction for the growth and development of the Institute.
2. Sanctioning of funds for the Institute.
3. Overseeing the development of new buildings/facilities.

MANAGING DIRECTOR

1. Supervising implementation of directions given by the Chairman
2. Ensuring and facilitating smooth functioning of the Institution
3. Financial control and maintenance

PRINICIPAL

1. Implementation of academic programme, covering the curricular and cocurricular areas
2. Liasoning with and fulfillment of requirements of University and AICTE
3. Establishment of linkages with Corporates and other Management Institutes
4. Recruitment of Faculty and providing motivation and direction to the faculty to ensure efficient delivery of the curriculum.
5. Placement

e. **Methods/Style of Administration/Management**

The Administration is decentralized to the Department level so that the Principal can execute his / her innovative techniques of teaching and can take decisions regarding staffing, teaching, evaluation, etc. Interaction with Senior Management will be open and regular to ensure the best is provided for the students.

1.10 Conceptual Master Plan for Main Campus Development

The details of the Master Plan for Campus Development starting from the selection of a site to the proposed Land use pattern and the Phase-wise construction of various facilities/utilities to the Level of Landscaping. Institutional aspects of development are expected to be taken up in consonance with the Master Plan keeping in view various aspects of convenience, safety, sustainability and utility of the facilities shall be described as follows:

a. **The Site**

The Site is a 14.06 acre single plot of land in Greater Noida.

b. **Proposed Land Use Pattern**

Out of the 14.06 acres, 1.5 acres will be allocated for the Institute of Management

c. **Design Concept with proof of sustainability (As per Green Building Code 2017 is mandatory)**

The designing and layout has been done with a view to have a lot of green open beautifully landscaped area where the students can connect to nature. The buildings are spacious, well lit and well ventilated. Solar panels, water harvesting plants, compost machines, etc are installed.

d. **Infrastructural Facilities in the Campus**

Buildings are as per the site plan and building plans attached. Canteen, Photocopying facility, and internet facility are available in the campus. Complete outdoor sports facilities including football, cricket, volleyball, basketball, badminton, yoga, etc and indoor sports facilities such as carom, table tennis, chess, gym etc. are also available in the campus.

e. **External Services**

Greater Noida has been developed as a modern city with hospitals, schools, higher education institutes, metro, transport facilities, malls, etc. Any additional services can also be accessed from Delhi which is just 45 minutes away.

f. **Construction Systems and Materials**

Construction is done by contractors and the plans are designed by the Architect. The materials used are of high quality and as per building norms.

g. **Landscape Proposal**

The landscape planning has been done from the initial stages and now the campus could probably boast of having the maximum number of trees and best landscaping among the institutions in Greater Noida. Fountains and seasonal flowers form a part of the landscape.

1.11 Requirement of Staff, Space, Equipment and their Cost

Make a consolidated estimate of Phase-wise requirements of the Staff, Building, Equipment and their cost, along with strategies for the mobilization of funds required, as follows:

a. **Introduction**

The requirements of BBA programme comprise of qualified faculty, rich library, modern classrooms, well equipped computer lab.

b. **Faculty Requirements**

Faculty will be recruited in a phase wise manner with one Professor/Director, 1 Associate Professors and 2 Assistant Professors in the first year; 1 Associate Professor and 2 Assistant Professor in the second year; and 2 Assistant Professors in the third year. The regular faculty will be supplemented by Guest lectures from the industry.

c. **Non-Teaching Staff Requirements**

The following staff would be made available for the programme in the first year itself:

Accountant -1
Librarian -1
Library Assistant- 1
Office Assistant -1
Receptionist -1
Computer Lab Assistant-2
Attendants- 3

d. **Building Requirements: Area and Costs**

The total built up area of the Building sufficiently fulfills the requirement of AICTE norms. The Building was completed in 2001 and hence there will only be some renovation costs upto Rs. 10 lacs to make the building ready for the BBA programme.

e. **Estimated Cost of Equipment**

Equipment required	1 st year (Qty)	Cost (in Rs. Lacs)	2 nd year (Qty)	Cost (in Rs. Lacs)	3 rd year (Qty)	Cost (in Rs. Lacs)
Interactive Boards	1	2	1	2	1	2
Computers and Printer	30	10	10	4		

f. **Phase-wise Financial Requirements**

Total Funds required would be approximately as follows:

	1 st year (in Rs. Lacs)	2 nd year (in Rs. Lacs)	3 rd year (in Rs. Lacs)
Building(Maintenance/Addition/Alteration)	5	3	2
Furniture	5	3	
Lab/Equipment	12	6	2
Library	2	2	2
Faculty	16	27	33
Non Teaching Staff	19	20	21
Total	59	61	60

g. **Strategies for Financial Mobilization**

Initially, the costs will be borne by the Trust. In subsequent years, the operational and other costs will be covered by the fees received.

1.12 Action Plan for Implementation

The Activity Chart from the conceptual stage to final implementation, indicating a time- activity Chart for various activities, its constraints and implementation Strategy including financial out-lay shall be described as follows:

a. **Activity Chart**

Purchase of Computers/Library Books	December 2024
Identification/Appointment of Principal	February 2025
Renovation and purchase of equipment/furniture	March 2025
Identification/appointment of Non teaching staff	April-May 2025
Start of session	July 2025

b. **Constraints**

No constraints are foreseen once the admissions and approvals are done timely.

c. **Financial Outlay**

	1 st year (in Rs. Lacs)	2 nd year (in Rs. Lacs)	3 rd year (in Rs. Lacs)
Building(Maintenance/Addition/ Alteration)	5	3	2
Furniture	5	3	
Lab/Equipment	12	6	2
Library	2	2	2
Faculty	16	27	33
Non Teaching Staff	19	20	21
Total	59	61	60

d. **Strategy for Implementation**

The implementation of the project has already begun and will be as per the timeline set.

1.13 Executive Summary of the Detailed Project Report

A Summary of the DPR as per the following Format for ready reference shall be given:

a. **Details about the Promoting Body**

Rama-Eesh Charitable Trust was founded in August 4, 1992. It is registered under the Income Tax Act. The Trust was formed by Dr. R.C. Sharma, former Senior Advisor, UNESCO, Paris to contribute in the field of education and health for the betterment of the society.

- b. **Name and Address of the Promoting Body**
 Rama-Eesh Charitable Trust, 6 SFS Apts, Hauz Khas, New Delhi 110016
 Also Plot no. 3, Knowledge Park 1, Greater NOIDA, UP 201310
- c. **Date of Registration/Establishment of the Promoting Body**
 August 4, 1992
- d. **Nature of the Promoting Body**
 Charitable Trust
- e. **Activities of the Promoting Body since inception**

The promoting body has been involved in the following social and educational activities:

Establishment of educational institutions in Greater NOIDA providing education from Nursery to Class XII, D.Pharm, B.Pharm, M.Pharm, and Diploma in Engineering.

Providing Scholarship to poor and deserving students

Providing free education to orphan girls

Donating to PM relief fund, CM relief fund in times of natural calamities

Providing daily Bhandara to 300 persons outside GIMS hospital, Greater NOIDA

Providing food rations to homeless and destitute being taken care of by Earth Saviours Foundation.

- f. **Constitution of the Promoting Body**

The promoters are educationists of national and international repute who have made significant contributions in the field of education and have a philanthropic approach.

1. Dr. R. C. Sharma, M.Sc., Ph.D., Ed.D. (Columbia University), Former Adviser, UNESCO, Paris

2. Shri R.D. Sharma, Retired ITI professor

3. Ms. Pratibha Sharma, MBA, associated with Ram-Eesh Group of Institutions for over 25 years

1.14 Faculty Data

The advertisement for faculty has been published. The process of shortlisting and identification will begin once applications are received. Appointments will be done before the start of the session.

Name	Academic Qualifications	Nature of Association with the Promoting Body	Experience in Academic Institutions (in years)		
			Promotional	Management	Organizational
	Technical	Non-Technical			

1.15 Proposed Institution

- a. **Details about the Proposed Institution**

Ram-Eesh Institute of Management will provide excellence in management education and its application. It will develop linkages with the corporate world and renowned Institutes of Management so that students are exposed to the best and latest techniques in Management.

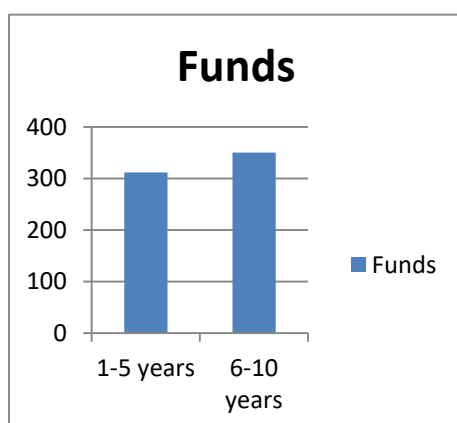
b. **Development Plan for the Proposed Institution**

Activity Chart

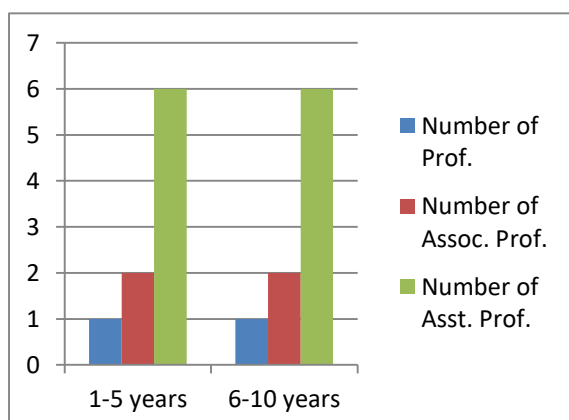
Purchase of Computers/Library Books	December 2024
Identification/Appointment of Principal	February 2025
Renovation and purchase of equipment/furniture	March 2025
Identification/appointment of Non teaching staff	April-May 2025
Start of session	July 2025

1.16 Graphical Representation

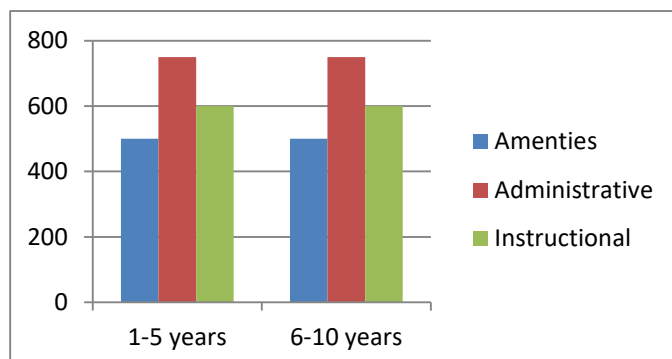
- a. Give a bar chart indicating mobilization of funds for the proposed project at the time of establishment and for next 10 years at intervals of five years.



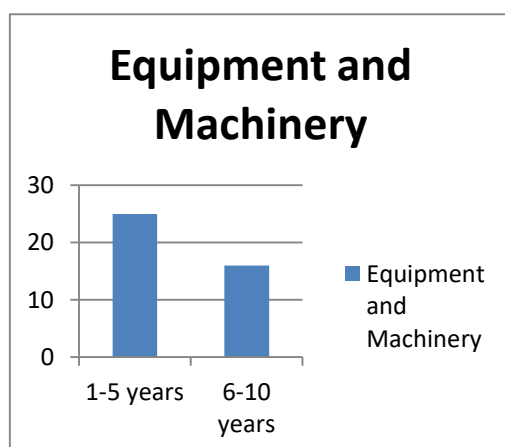
- b. Give a bar chart indicating the recruitment of Faculty (separately for Lecturer, Assistant Professor, Associate Professor, Professor) for the proposed project at the time of establishment and for next 10 years at intervals of five years.



- c. Give a bar chart indicating creation of Built-up area (separately for Instructional, Administrative and Amenities) for the proposed project at the time of establishment and for next 10 years at intervals of five years.



- d. Give a bar chart indicating investment on Equipment and machinery for the proposed project at the time of establishment and for next 10 years at intervals of five years.



1.17 Total Project cost (at the time of establishment and next five years)

Year	Course(s)/ Intake Proposed (I)	Built-up area/ Investment to be made (m ² /₹)(II)	Investment on Furniture and Accessories (₹in Lakh) (III)	Investment on Equipment/ Machinery (₹in Lakh) (IV)	Projected expenditure on Salary Of Staff per annum (₹in Lakh)(V)	Investment on the Library(₹in Lakh)(VI)	Total Project Cost (I to VI) and Preoperative Exp.)(₹in Lakh)
0	0	5	5	12		2	24
1	60	3	3	6	35	2	49
2	60	2		2	47	2	53
3	60	1	1	1	54	2	59
4	60	1	1	1	58	1	62
5	60	1	1	1	61	1	65

1.18 Details for mobilization/source of funds (capital and recurring) (At the time of establishment and next five years)(₹ in lakh)

Year	From Applicant	Donations	Grants from Government	Fee	Loan	Others
0	24					
1	29			20		
2	13			40		
3	0			60		
4	2			60		
5	5			60		

1.19 Recruitment of Faculty(At the time of establishment and next five years)

Year	Professor	Associate Professor	Asst.Professor	Lecturer	Total
0	1				1
1		1	2		3
2		1	2		3
3			2		2
4					9
5					9

1.20 Recruitment of non-teaching Staff (at the time of establishment and next five years)

Year	Technical	Administrative	Total
0		2	2
1	2	2	4
2	1	2	3
3			9
4			9
5			9

1.21 Proposed structure of the governing body

Sl.No.	Trust/Society/ Company Representative	Academic Background		Industry Representative	Others
		Technical	Non-Technical		
1. Chairman		4. Principal		7.Reputed Industrialist	8. Parent
2. Member to be nominated by Registered Trust					
3. Member to be nominated by Registered Trust		5.Faculty Member			
		6.Nominee of AKTU			

1.22 Industry Linkages(at the time of establishment, and next five years)

At least minimum 5 MoUs and proof of relevance have to be produced. Purpose and outcomes of MoU shall be documented.

Ram-Eesh Group of Institutions has been running successfully for over 25 years and has developed as very good reputation with the Industry and Institutes. It will secure 5 MOUs with reputed Institutions and Companies once it starts functioning.

DECLARATION

I/We, on behalf of Rama-Eesh Charitable Trust hereby confirm that this Detailed Project Report has been prepared for its proposed Technical Institution under the name and style of Ram-Eesh Institute of Management. It is hereby confirmed that all the information furnished above is true to the best of my/ our knowledge and belief and if any information is found to be false, the proposal shall be rejected.

(Authorized Signatory of the Applicant)

Place:

Name

Date:

Designation

Seal